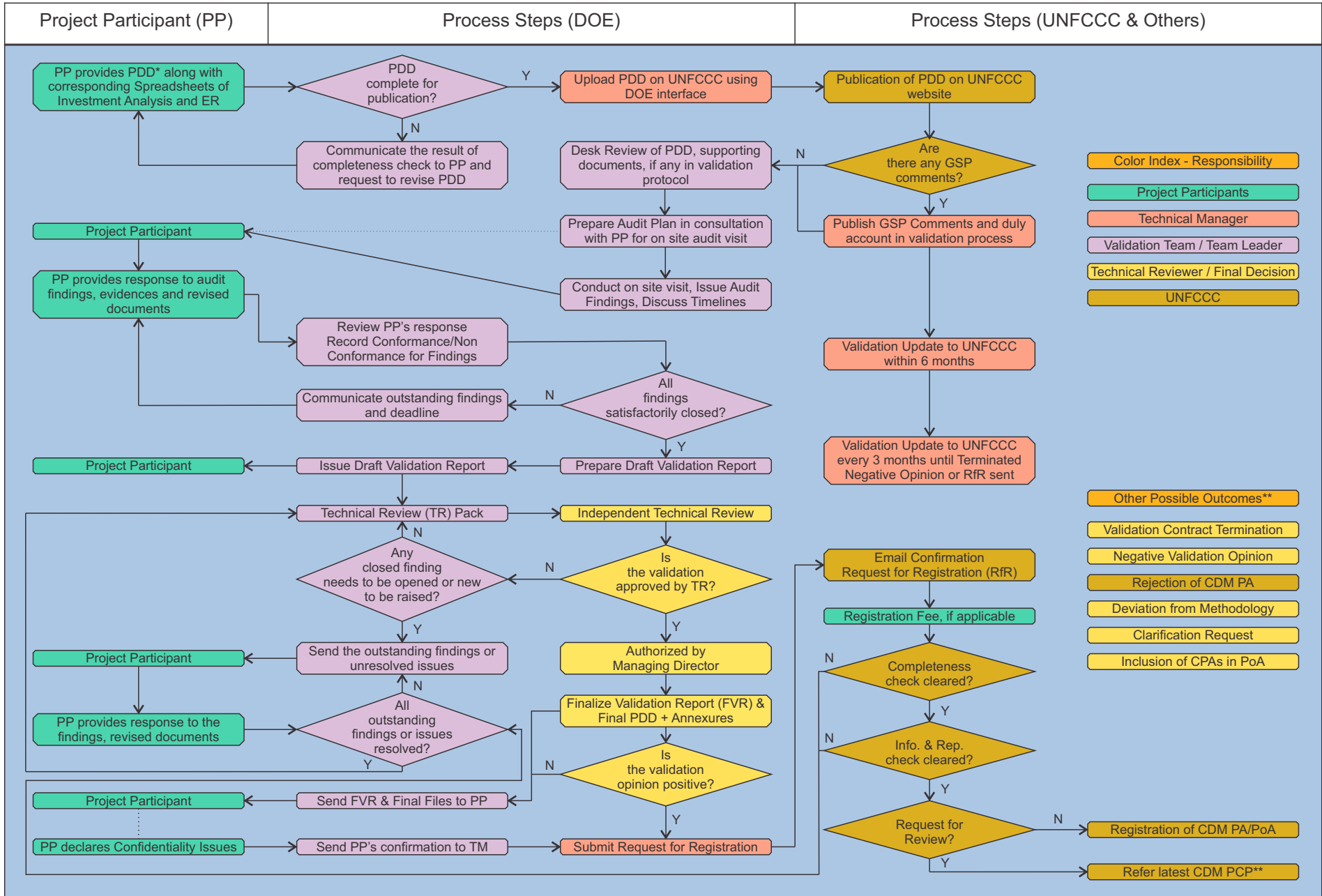


## CDM Validation Process at Earthood Flow Chart



Disclaimer: The information presented here is current to the best of our knowledge. However, we do not undertake any responsibility on its use. The information is liable to change/modification/removal at our discretion due to internal procedures. The information and this document can be freely downloaded, circulated without altering the content in any manner.

\*PDD is used for CDM project activities as an example, please replace them with appropriate terms for CDM programme of activities e.g. PoA DD, CPA DD Generic & Specific  
 \*\*Latest version is available at [www.cdm.unfccc.int](http://www.cdm.unfccc.int).